



SHIFT

You are your own healer.

Intuitive Energy
Reading

authentic
YOU

Somatic
Experiencing

CranioSacral
Therapy

SOMATIC



Somatic

soma - body

Somatic: relating to the body, especially as distinct from the mind.

We honor the body's innate wisdom to know what it needs to heal itself.

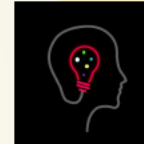
HEALING

Healing

Healing does not happen in a straight line, and each individual's healing journey is **beautifully unique**. Regardless of how winding the path, we are always leveling up.



INTUITION & INSIGHT



Intuition

The quieter you become, the more you can hear.

A quiet, comfortable space allows for tapping into your deepest truths and wisdom to gain insight through intuition.

FLOW

Flow

The man over steps in the same river twice, for it is not the same river and he is not the same man.

— Heraclitus

Entering a state of flow is to honor the truth that the only constant is change, where everything is in a state of flux, and nothing remains the same. It is our opportunity for growth and transformation.



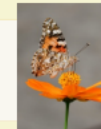
TRANSFORMATION

Transformation

There is nothing in a caterpillar that tells you it's going to be a butterfly.

— Barbara Johnson

Change is inevitable, but transformation is a choice. It is a choice of self-love and a desire to not merely exist, but to evolve.





Somatic

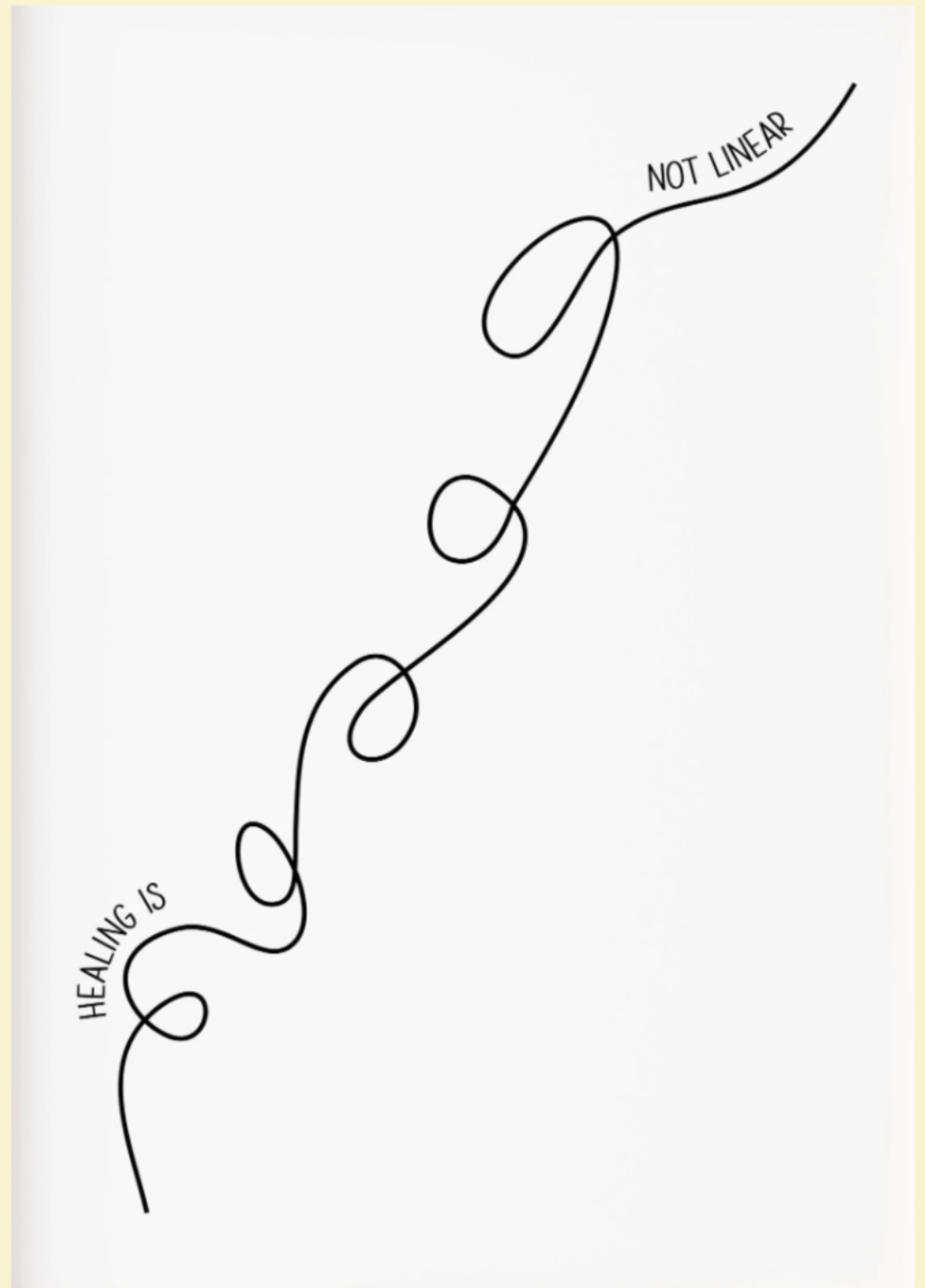
soma = body

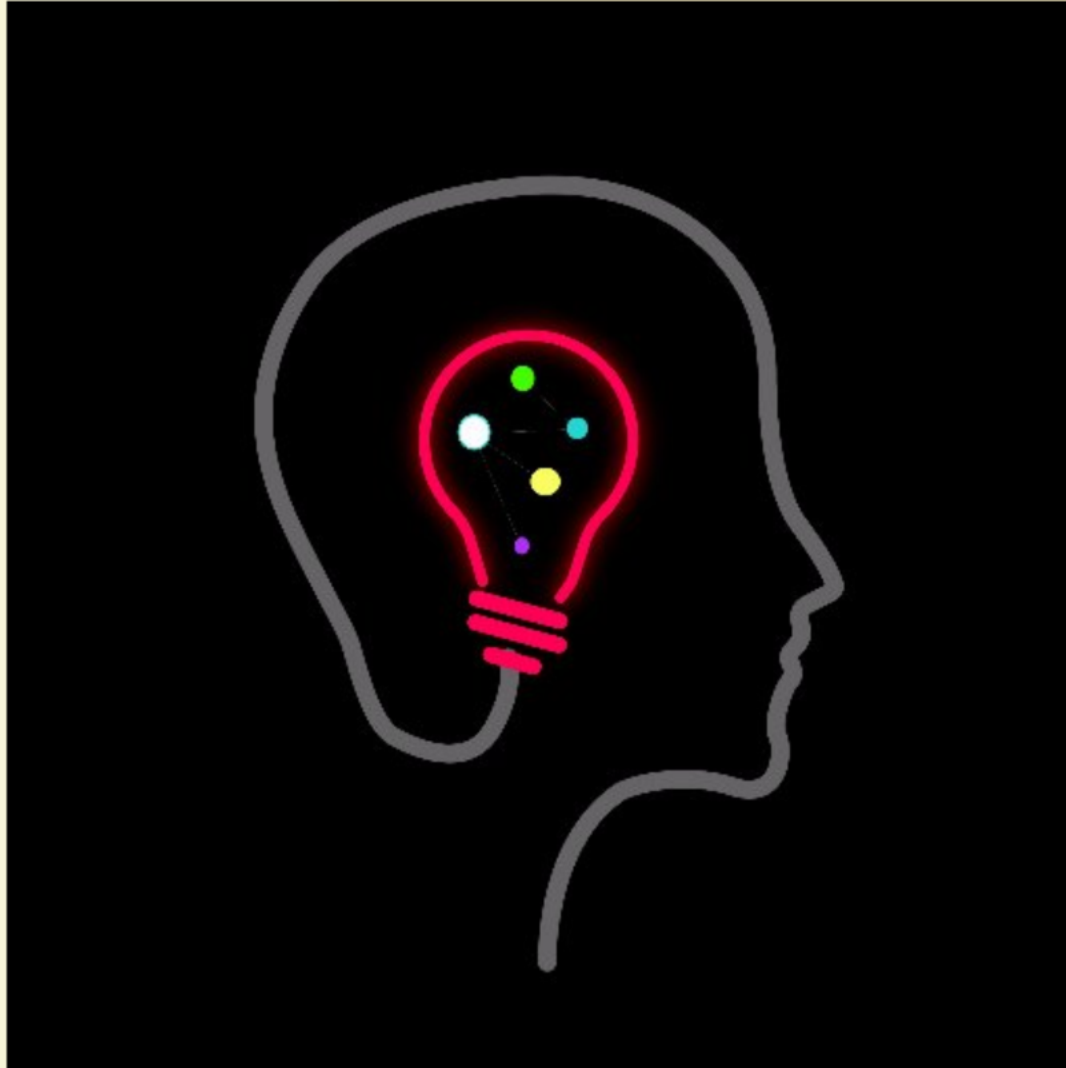
Somatic: relating to the body, especially as distinct from the mind.

We honor the body's innate wisdom to know what it needs to heal itself.

Healing

Healing does not happen in a straight line, and each individual's healing journey is ***beautifully unique***. Regardless of how winding the path, we are always **leveling up**.





Intuition

*The quieter you become,
the more you can hear.*

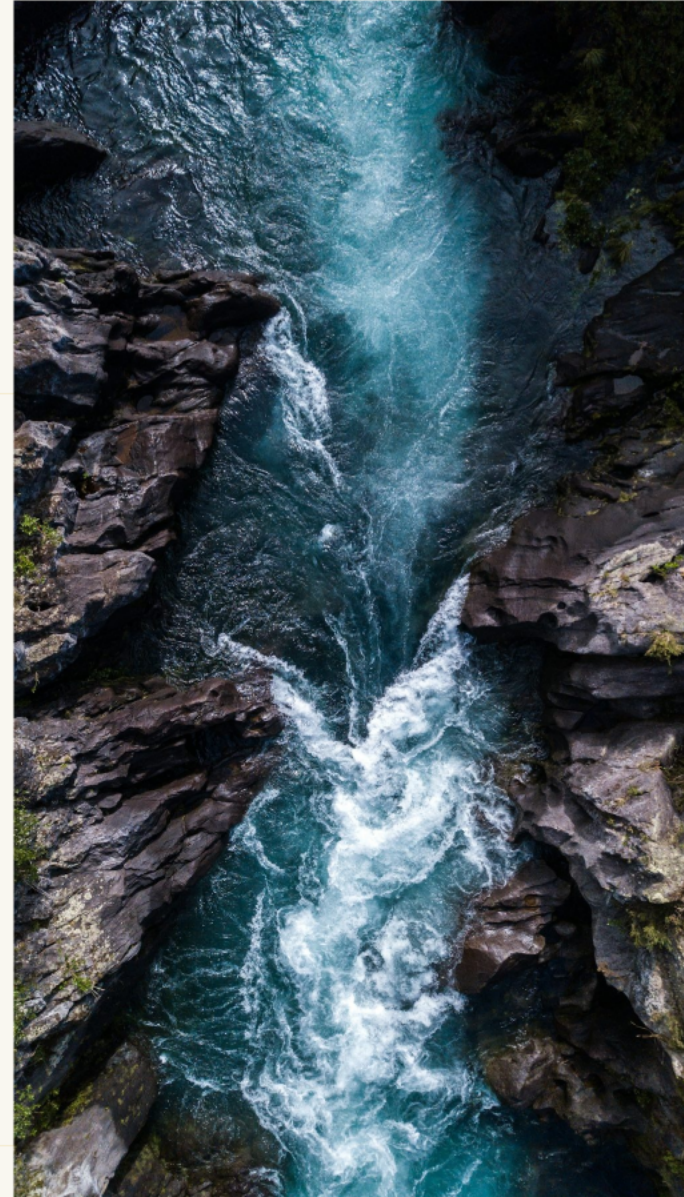
A quiet, comfortable space allows for tapping into your deepest truths and wisdom to ***gain insight*** through intuition.

Flow

"No man ever steps in the same river twice, for it is not the same river and he is not the same man."

- Heraclitus

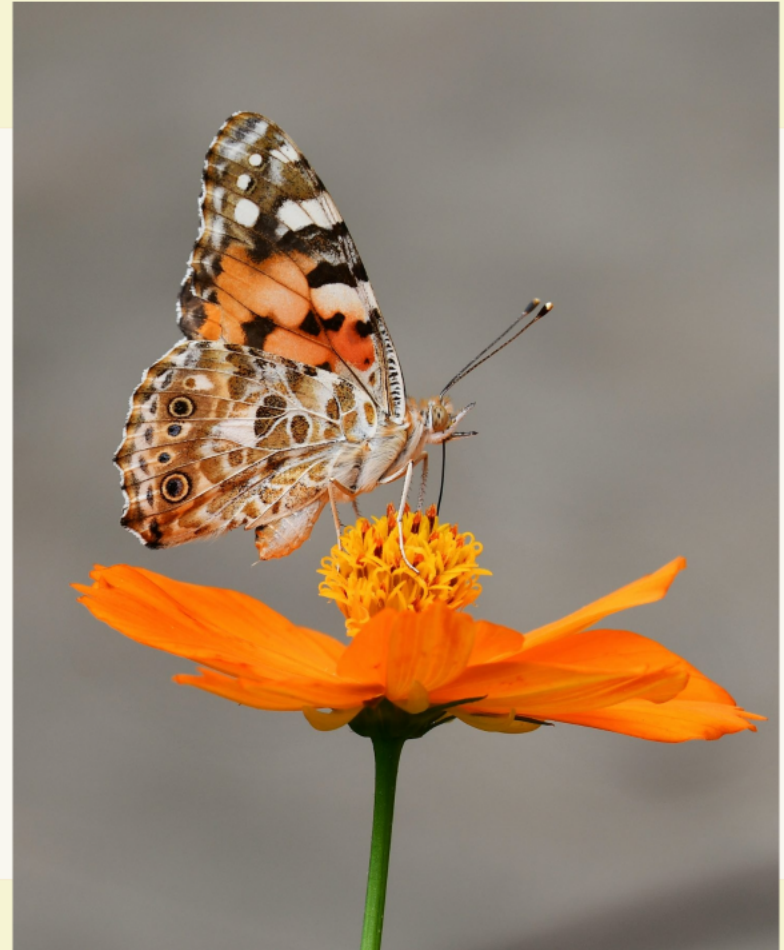
Entering a state of **flow** is to honor the truth that the only constant is change, where everything is in a state of flux, and nothing remains the same. It is our **opportunity** for growth and transformation.



Transformation

*"There is nothing in a caterpillar that tells you it's going to be a butterfly."
- R. Buckminster Fuller*

Change is inevitable, but transformation is a **choice**. It is a choice of self-love and a desire to not merely exist, but to **evolve**.





SHIFT

You are your own healer.

Intuitive Energy
Reading

authentic
YOU

Somatic
Experiencing

CranioSacral
Therapy

Intuitive Energy Reading



Overview of Intuitive Energy Reading

Intuitive Energy Reading is a holistic approach that interprets an individual's energy field. It seeks to provide insight into emotional, physical, and spiritual well-being through intuitive practices.

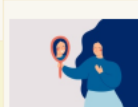
The Tarot Reading Process

During a tarot reading, two individuals sit across from each other, with each card drawn revealing insights about the client's life path. The reader interprets these symbols, connecting them to the client's experiences and emotions.



Understanding the Messages

The messages from an intuitive energy reading offer guidance for taking achievable steps in life. Understanding these messages can lead to personal growth and deeper self-awareness, enabling clients to align with their true nature.





Overview of Intuitive Energy Reading

Intuitive Energy Reading is a holistic approach that interprets an individual's energy field. It seeks to provide insight into emotional, physical, and spiritual well-being through intuitive practices.

The Tarot Reading Process

During a tarot reading, two individuals sit across from each other, with each card drawn revealing insights about the client's life path. The reader interprets these symbols, connecting them to the client's experiences and emotions.



Understanding the Messages

The messages from an intuitive energy reading offer guidance for taking actionable steps in life. Understanding these messages can lead to personal growth and deeper self-awareness, enabling clients to align with their true nature.





SHIFT

You are your own healer.

Intuitive Energy
Reading

authentic
YOU

Somatic
Experiencing

CranioSacral
Therapy

Somatic Experiencing



Introduction to Somatic Experiencing

Somatic Experiencing is a body-oriented therapy aimed at relieving the symptoms of trauma. It focuses on bodily sensations, promoting healing through increased awareness of the physical self and its emotional connections.

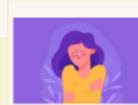
Benefits of Body Awareness

Increased body awareness enhances a person's ability to recognize and process emotional blockages. This awareness fosters personal empowerment, encouraging clients to express their feelings and ultimately discover healthier coping mechanisms.



Emotional Release Techniques

Somatic Experiencing utilizes specific techniques to encourage emotional release, such as guided imagery and mindfulness practices. Clients learn to reconnect with their bodies, allowing feelings to surface and be processed in a supportive context.





Introduction to Somatic Experiencing

Somatic Experiencing is a body-oriented therapy aimed at relieving the symptoms of trauma. It focuses on bodily sensations, promoting healing through increased awareness of the physical self and its emotional connections.

Benefits of Body Awareness

Increased body awareness enhances a person's ability to recognize and process emotional blockages. This awareness fosters personal empowerment, encouraging clients to express their feelings and ultimately discover healthier coping mechanisms.



Emotional Release Techniques

Somatic Experiencing utilizes specific techniques to encourage emotional release, such as guided imagery and mindfulness practices. Clients learn to reconnect with their bodies, allowing feelings to surface and be processed in a supportive context.





SHIFT

You are your own healer.

Intuitive Energy
Reading

authentic
YOU

Somatic
Experiencing

CranioSacral
Therapy

CranioSacral Therapy



What is CranioSacral Therapy?

CranioSacral Therapy is a holistic technique focusing on the craniosacral system, which includes the meninges and cerebrospinal fluid surrounding the brain and spinal cord. The therapy aims to alleviate tension and promote self-healing by releasing restrictions in the craniosacral system.

Role of the Therapist

The therapist acts as a facilitator, using their hands to gently manipulate the cranial bones and tissues. Their role is to create a safe and supportive environment, encouraging the client to connect with their body and facilitate their body's natural healing process.



Client Positioning

During a CranioSacral therapy session, the client typically lies comfortably on a massage table, fully clothed. Proper positioning allows for optimal relaxation, ensuring the therapist can access key energy pathways effectively without causing discomfort.

Gentle Touch and Its Effects

The therapist employs gentle, precise touch to release tension and enhance the natural rhythms of the body. This non-invasive method promotes relaxation and can decrease pain, reduce stress, and support emotional processing.



Client Feedback and Aftercare

Post-session, client feedback is vital for assessing the therapy's effectiveness. Therapists provide tailored aftercare guidance, which may include hydration, gentle movement, or mindfulness practices to support ongoing healing.





What is CranioSacral Therapy?

CranioSacral Therapy is a holistic technique focusing on the craniosacral system, which includes the membranes and cerebrospinal fluid surrounding the brain and spinal cord. This therapy aims to alleviate tension and promote self-healing by releasing restrictions in the craniosacral system.

Role of the Therapist

The therapist acts as a facilitator, using their hands to gently manipulate the cranial bones and tissues. Their role is to create a safe and supportive environment, encouraging the client to connect with their body and facilitate their body's natural healing process.





Client Positioning

During a CranioSacral therapy session, the client typically lies comfortably on a massage table, fully clothed. Proper positioning allows for optimal relaxation, ensuring the therapist can access key energy pathways effectively without causing discomfort.

Gentle Touch and Its Effects

The therapist employs gentle, precise touch to release tension and enhance the natural rhythms of the body. This non-invasive method promotes relaxation and can decrease pain, reduce stress, and support emotional processing.



Client Feedback and Aftercare

Post-session, client feedback is vital for assessing the therapy's effectiveness. Therapists provide tailored aftercare guidance, which may include hydration, gentle movement, or mindfulness practices to support ongoing healing.





SHIFT

You are your own healer.

Intuitive Energy
Reading

authentic
YOU

Somatic
Experiencing

CranioSacral
Therapy

Client Transformation

The Journey to Self-Awareness

Embarking on a healing journey leads clients to a deeper understanding of their emotions and behaviors. As they engage in practices like intuitive energy flow, they gain insights that foster personal growth and connection to their true selves.



Signs of Healing and Awakening

Clients often experience significant changes such as heightened emotional clarity, enhanced physical vitality, and improved relationships. These signs indicate that clients are aligning more closely with their authentic selves, marking their journey toward healing.



Maintaining Peace and Balance

After the transformative process, clients learn techniques to sustain their newfound peace. Practices such as mindfulness, regular check-ins, self-healing practices, and ongoing self-reflection are essential for maintaining emotional and spiritual equilibrium.



Client Testimonials

Positive feedback from clients underscores the effectiveness of the healing practices. Many express feelings of liberation, saying they feel awakened to their true nature and more connected to themselves and others.



Next Steps in the Healing Journey

Clients are encouraged to continue their journey through regular sessions and community support. Following up with practitioners and joining support groups fosters personal growth and helps in integrating the changes experienced during healing.



The Journey to Self-Awareness

Embarking on a healing journey leads clients to a deeper understanding of their emotions and behaviors. As they engage in practices like Intuitive Energy Reading, they gain insights that foster personal growth and connection to their true selves.



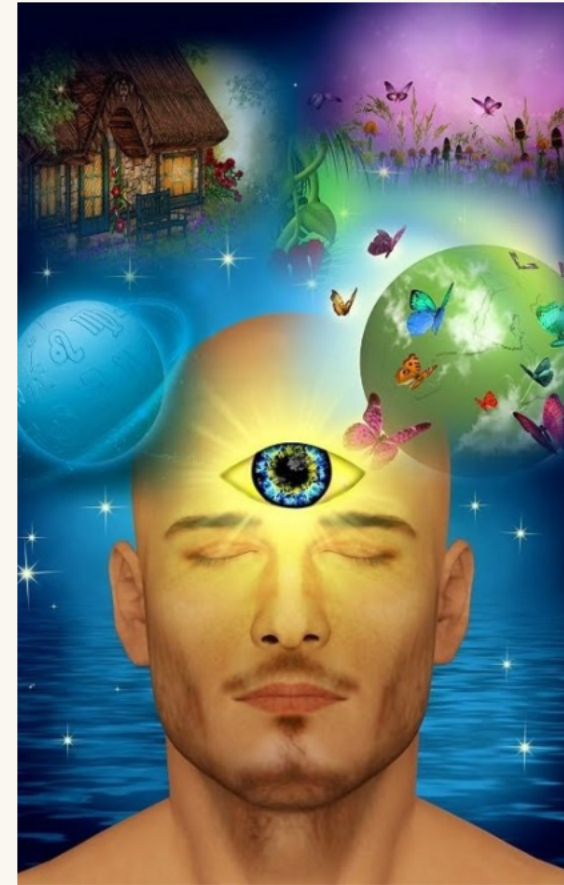


Signs of Healing and Awakening

Clients often experience significant changes such as heightened emotional clarity, enhanced physical vitality, and improved relationships. These signs indicate that clients are aligning more closely with their authentic selves, marking their journey toward healing.

Maintaining Peace and Balance

After the transformative process, clients learn techniques to sustain their newfound peace. Practices such as mindfulness, regular check-ins with healing practitioners, and ongoing self-reflection are essential for maintaining emotional and spiritual equilibrium.





Client Testimonials

Positive feedback from clients underscores the effectiveness of the healing practices. Many express feelings of liberation, saying they feel 'awakened' to their true nature and more connected to themselves and others.



Next Steps in the Healing Journey

Clients are encouraged to continue their journey through regular sessions and community support. Following up with practitioners and joining support groups fosters persistent growth and helps in integrating the changes experienced during healing.



SHIFT

You are your own healer.

Intuitive Energy
Reading

authentic
YOU

Somatic
Experiencing

CranioSacral
Therapy